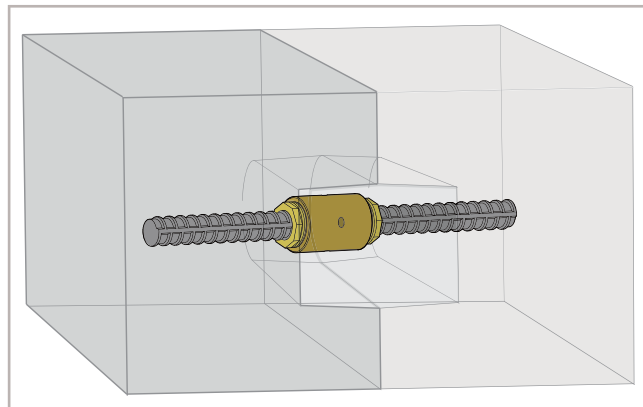


# D Anchor Coupler Systems PAT.P

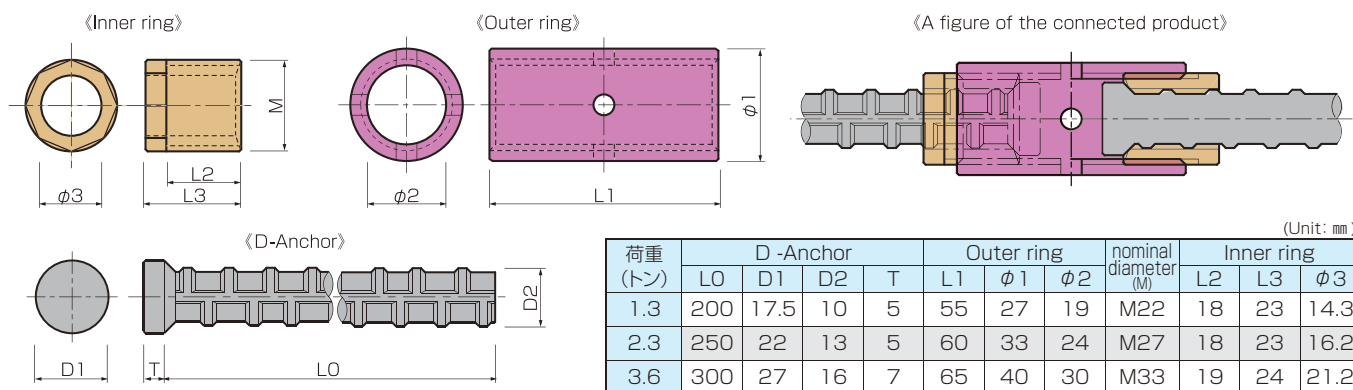
## Product overview and features

D anchor coupler system is the system consist of anchor that made from the edge of deformed bar and coupler with internal thread so that enable the connection and closing distance of the concrete products.

- D anchor made by specially processing the edge of deformed bar or steel rod. The customization of the shape and length of the anchor is available.
- By using the jigs, it enable to apply to the products safely and securely.
- We have 3 types per load apacities, 1.3tons/2.3tons/3.6tons. It is easy to select upon requirement.
- Be able to install by spanner in the market even during the installation at site.
- Enable to connect concrete products, and close the distance between concrete products.
- For detail, please request technical data.



## Specification of D-Anchor coupler



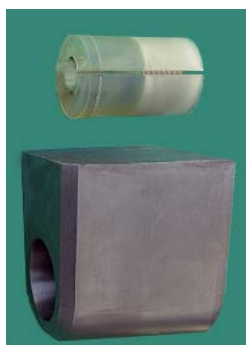
## Installation Jig to the form panel for D-Anchor

Jig for install to the form panel of concrete product. The shape of jig has been specially designed to fix the D-anchor with anchor holder.

<Anchor holder> (made by resin)  
Holder of setting D anchor with the jig.

<Jig to form a void>  
The jig will be installed to form panel for product and keep the D-anchor that set to resin made anchor holder.

Top: Anchor holder  
Bottom: Jig to form a void



## Setting the D-Anchor coupler

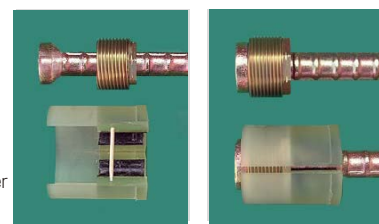
Connect D-Anchor with outer and inner ring



●Component of D-anchor coupler



●Set the D-anchor coupler



Put D-anchor into inner ring.

Cover with Anchor holder on the D-anchor that set with inner ring

## Setting the D-Anchor coupler

